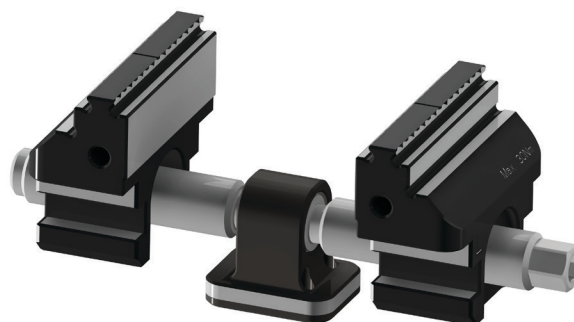
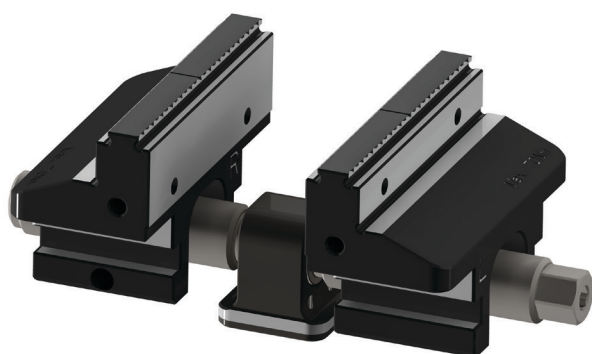


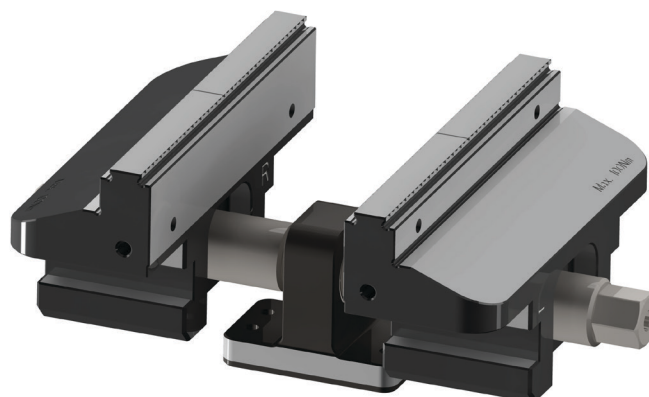
- Replacement kits for all NGV vices
- Kit comprised from two jaws, spindle and mounting part
- Jaws serrated on both sides
- Jaws also with smooth clamping surface for 2nd operations
- Replaceable only in kits



**KCV48**



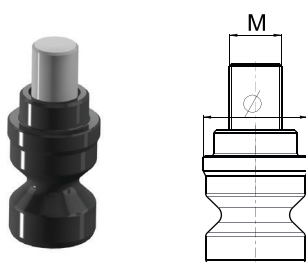
**KCV78**



**KCV126**

Spindle kits	KCV48S	KCV48M	KCV48L	KCV78S	KCV78M	KCV78L	KCV126S	KCV126M	KCV126L
Suitable for	CV48S	CV48M	CV78L	CV78S	CV78M	CV78L	CV126S	CV126M	CV126L

- Replacement centring pins



Centring pins	PC16	PC20
Thread (M)	M8	M10
Diameter	Ø16	Ø20
Used with zero point systems	□ 52	□ 96